



The Smeds and The Smoos © Julia Donaldson and Axel Scheffler 2019, published by Scholastic

The Smeds and The Smoos

VISUAL GUIDE

Table of Contents

What is a Visual Guide?	page 3
What is a play?	page 3
What will it be like when I go to the theatre?	page 5
Who are the characters in The Smeds and The Smoos?	page 15
What happens in the story of The Smeds and The Smoos?	page 20
What should I be ready for in the play?	page 28
What different kinds of shows are there?	page 35



Hello!

Welcome to the Visual Guide for our performance of The Smeds and The Smoos. This guide will tell you about the show you are going to see. You might find this particularly helpful if you're a little nervous about your trip to the theatre, if you have any specific sensory sensitivities or if you've never been to see a theatre show before.

What is a play?

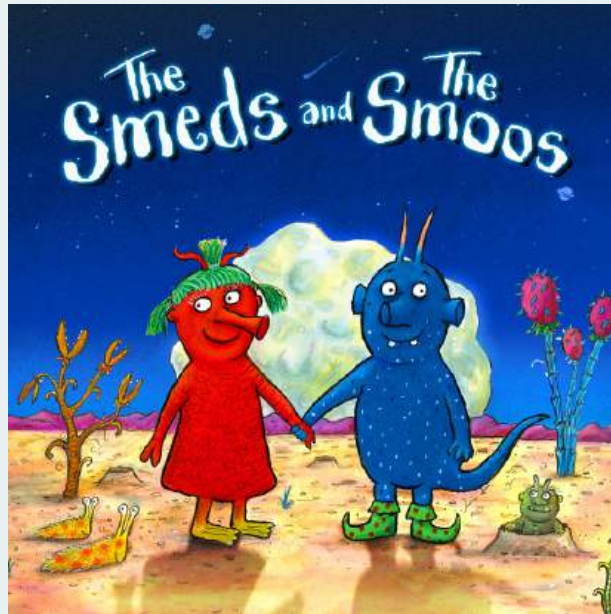


You are going to see a play called The Smeds and The Smoos. A **play** is a kind of story told by people called **performers**. The performers pretend to be different people in the play - these are called **characters**.

You will go and sit in a big room called a **theatre** with a lot of other people who want to see the play. The performers will wear special clothes called **costumes** and tell the story with singing, dancing and jokes.

The Smeds and The Smoos the play is based on a book that you may have read at home or at school, so you might already know who the characters are and what happens in the story.

This is what the The Smeds and The Smoos book looks like. Do you recognise it?



The Smeds and The Smoos © Julia Donaldson and Axel Scheffler 2019, published by Scholastic

This is what the The Smeds and The Smoos play will look like. Does it look a bit like the book?



This purple picture is the logo for Tall Stories.
Tall Stories is the name of the company that
made the play you are going to see.



What will happen when I go to the theatre?

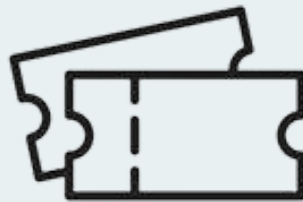


The theatre is a building with a big, open room where
you watch the play. Some theatres have other activities
too so you may have visited your theatre before.



You will need a ticket to see the play. You may already have yours or you may have to ask someone who works at the theatre.

When you go into the theatre you will be in a big room called the **foyer** and in here will be a desk called the **Box Office**. Someone there will help you with your tickets.



The theatre may have a café and there will be toilets you can use.



When it's time for the play to start, there may be an announcement to let you know you can go and find your seats.

Every theatre is a bit different but there will be lots of seats. This part of the theatre is called the **auditorium**.

There will be an area at the front called the **stage**. This is the place where the performers will tell the story.

You will have seats just for you and someone who works at the theatre will help you find where you will sit.



On the stage is something called a **set**, which helps the performers to pretend to be in the story. The set for *The Smeds and The Smoos* has lots of rocks and plants from outer space which make the stage look like this:



The people watching the play are called the **audience**.

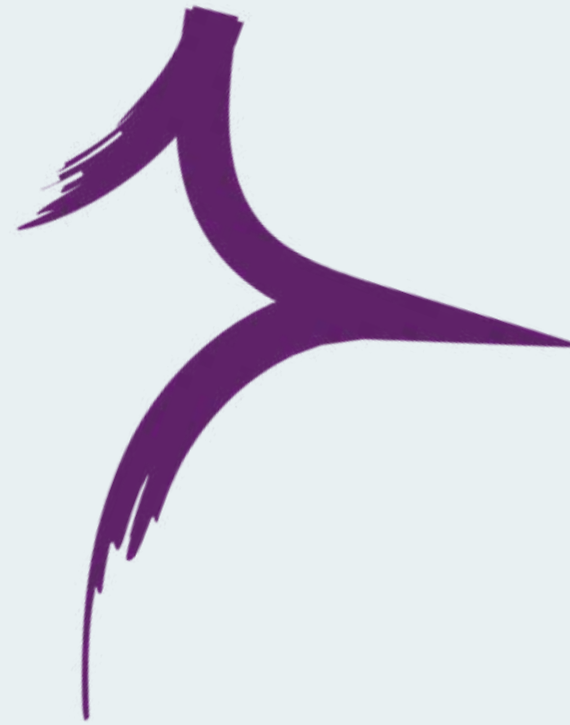
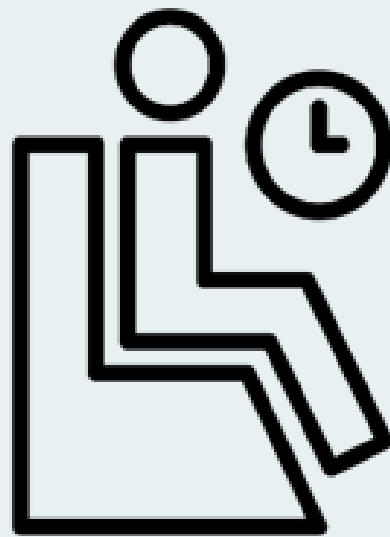
You may have to wait a bit while the rest of the audience finds their seats. This can be **busy and noisy** and you may have to move around to let people walk past you.

This may make you feel excited or impatient but everyone will settle down when the play starts.

While everyone sits down there will be some quiet music playing.



This will be your seat for the whole of the play. The play will last **nearly 1 hour**. If you need to get up and leave the room to take a break or use the toilet you can do that whenever you want.

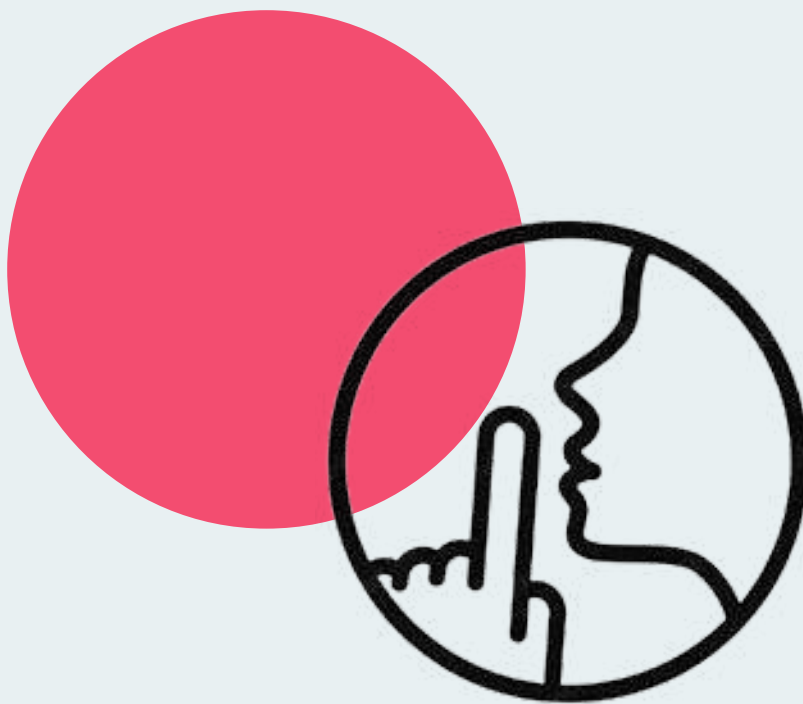


When the play is about to start the room will get a little **darker** and the stage will get a bit brighter. This might feel a bit scary but this helps you see the performers better.



It's good not to be too loud in the theatre so that everyone can hear the performers. You might hear other people making noises sometimes and if you need to make a noise that's OK too.

Sometimes the performers will even ask you to answer a question or make a noise. It's fun to join in but you don't have to if you don't want to.



The performers will come onto the stage to start the play. When they come out they will look like this:



As they start to tell the story they will dress up as different characters.

Janet



Janet is a young smed who has lots of energy. She likes to tell stories and is a bit cheeky. She likes Bill and wants to spend more time with him even though she's not allowed to.

She wears a red vest, a red skirt and has a green feathery headband with red antennae.

Bill



Bill is a young smoo who likes to sing. He likes to learn about the world and likes to spend time with Janet, even though he's not allowed.

He wears a grey long-sleeve top and trousers with a blue gilet. He wears a blue hat with blue and pink antennae. He also has a big pointy blue tail.

Grandfather Smed



Grandfather Smed loves swimming, splashing and drinking pink milk. He doesn't want Janet spending time with Bill because he's a Smoo.

He wears a red long sleeve top, a red apron, grey trousers and yellow shoes. He also wears a fluffly grey hat with red antennae.

Grandmother Smoo



Grandmother Smoo enjoys jumping, bouncing and eating green stew. She doesn't want Bill spending time with Janet because she's a Smed.

She wears a grey long sleeve top, grey trousers and a blue waistcoat that has a pointy tail at the back. She also wears a blue hat which has a grey bun and blue and pink antennae attached to it.

Jeffrey



Betty



Jeffrey is a Smed and Betty is a Smoo. They join Grandfather Smed and Grandmother Smoo on their adventure to find Bill and Janet. Betty is very excited to see new planets, but Jeffrey is a little nervous.

What is The Smeds and The Smoos about?



The Smeds and The Smoos is about two alien families who don't get along. But when Bill, a Smoo, and Janet, a Smed, make friends they decide to run away so that they can be together. Bill and Janet's families miss them and they work together to go on a journey through space to find them and bring them home.



When the play starts you see the performers beginning to tell the story but they have to stop and try to calm down a crying baby. Once they manage to stop the baby crying you meet Janet, Bill, Grandfather Smed and Grandmother Smoo.

They sing songs about what they like to do and why they are different. The grandparents remind Bill and Janet why they shouldn't play with the other.



The next morning we meet a Smed called Jeffrey and a Smoo called Betty. The Smeds go swimming and the Smoos jump around.

But Bill gets bored of jumping on the humplety hill so he takes a walk into the Wurplar Wood where he meets Janet. Bill and Janet make friends and they play, sing and draw pictures of each other.



The Grandparents find their grandchildren in the wood and split them up, taking them back home.

Years go by and Bill and Janet grow up but they miss each other so they secretly go to the wood to play together.



Bill and Janet fall in love and decide to get married. When they tell their grandparents, they don't agree with Bill and Janet getting married because they think Smeds and Smoos should never mix.

Bill and Janet are upset by their grandparents' reaction. They make a plan to run away to another planet so they can be together. They sneak off in the night.

When the grandparents wake up, they can't find Bill and Janet. The Smeds' red rocket is gone and so they realise Bill and Janet have used it to run away.



The grandparents, Jeffrey and Betty use the blue rocket to travel to different planets to look for Bill and Janet.



They visit Planet Vumjum, Glurch, Lurgleestorp, Grimbletosh, Scooop, Klaboo and Earth. They meet lots of aliens and creatures on the way...



The Vums



A Lurgle



The Grimbles



The Glurch



The Smeds and The Smoos Visual Guide

Grandfather Smed and Grandmother Smoo learn to get along whilst on their adventures. They share their milk and even cut each other's hair!

They don't find Bill and Janet on any other planet. They decide they should return home but they will go home as friends and learn from the past.



But... when they return to their planet, they find Bill and Janet waiting for them.

The families are all back together again and they decide that from now they don't need to argue anymore, they can all live together.

Bill and Janet introduce their grandparents to their new baby who isn't red or blue, the baby is purple!



They all celebrate together and share their joy by jamming, jumping and splashing!



What is going to happen in the play?

You've seen how the stage looks when you arrive, but some of things can change. The trees change positions and the blue rocket is made from pieces of set. The screen at the back changes colour and sometimes the lights will get **brighter or darker**.



There will be music and songs. Sometimes after a song people might clap and make **noise**.



Sometimes the performers will ask a question that you can answer, or they may ask you to join in by making a noise or doing an action. It's fun to join in but you don't have to if you don't want to. When this happens it can be **very noisy!**



During the play the performers will spray water into the audience with water pistols. If you are sat near the stage you might get a little bit **wet**.

At this time the people near you might be very excited and **loud**.



Sometimes something that happens in the play may make you feel sad or scared. It's OK to have these feelings and it's good to remember that the end of the play will be happy.



At the end of the play the performers will all stand together. Everyone will clap and it will be **very loud**. If you think the performers did a good job you can clap too - clapping is like saying thank you to the performers. This is called **applause**.



After the performers exit the stage it is time for everyone to leave the theatre. This will be **busy and noisy**, because everyone will still be excited about seeing The Smeds and The Smoos.



Different ways you can see the play

You might be seeing a special version of the show called a Relaxed Performance or a show with Audio Description or British Sign Language (BSL) Interpretation.



In a Relaxed Performance the room won't be as dark and the sound won't be as loud. The other people watching the show may be making more noise and moving around more. The performers might stay on the stage the whole time - but if one of them comes into the auditorium, they won't come near you.



In an Audio Described performance you can get headphones and listen to someone describe what the stage looks like and what the performers are doing.



In a BSL performance someone called an interpreter will be on stage together with the performers. The interpreter will translate what the performers say into British Sign Language so that audience members who use BSL can understand what is happening in the play.

You may also be going to a Touch Tour. A Touch Tour will happen at the theatre before the play.



This is so you can see the stage, the set and costumes up close and touch some of them. One of the performers or someone who works at the theatre will let you go up on the stage and help you to look at and touch different things from the play.

Touch Tours are really helpful if you are visually impaired or if you would feel happier about seeing the play if you know what it's going to look like first.

Enjoy the show!



Tall Stories
68 Holloway Road
London N7 8JL

020 8348 0080
tallstories.org.uk



@TallStoriesTheatre



@TallStories



@TallStoriesLive